

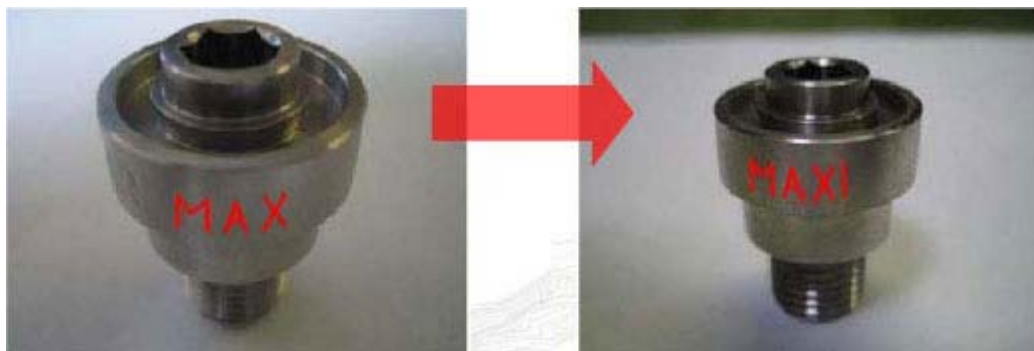
Recall of Titan / Conshelf DIN Handwheel Retainers

Aqua Lung was recently informed about the breakage, under pressure, of a **TITAN/CONSHSELF DIN HANDWHEEL RETAINER** weakened during service by manual torque loads superior to the recommended values.



Aqua Lung asks all the owners of TITAN DIN regulators whose serial number is lower than 6062501 or **TITAN/CONSHSELF DIN** adaptors that are marked **300 BAR MAX** to return their regulator to their Aqua Lung authorized retailer for an upgrade.

The corrective action is replacement of the brass DIN HANDWHEEL RETAINER by another stainless steel **DIN HANDWHEEL RETAINER** marked **300 BAR MAXI**.



This replacement is made under warranty.

All the **TITAN DIN** regulators whose serial number are above 6062501 and/or whose DIN handwheel retainer is marked **300 BAR MAXI** are assembled with a stainless steel DIN handwheel retainer and are not affected by this recall.