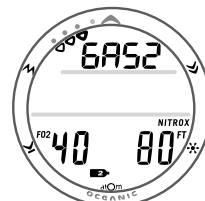


SAFETY RECALL

OCEANIC®

ATOM 2.0 Dive Computers



During dives in which multiple Gases are being used, the ATOM 2.0 display can lock in to the Gas 2 (switch-to) Preview screen when a switch is made from Gas 1 that has a Transmitter associated with it to Gas 2 that does not have a Transmitter, and will not return to the Main Dive screen. Current Depth will be displayed correctly and calculations will be performed based on the new Gas (#2). Times, such as Dive Time Remaining, Elapsed Dive Time, and Deco Stop Time will not be displayed. Although the Bar Graph continues to be displayed, it is not to be considered accurate.

**DISCONTINUE USE
for
ACTIVITIES INVOLVING SWITCHING OF MULTIPLE GASES
and
take it to the Oceanic Dealer where it was purchased
for
Upgrade to software Revision 3C.**

For information, contact Pelagic toll free at:

**(888) 854-4960
or locally at (510) 569-3100**

OceanicWorldwide.com